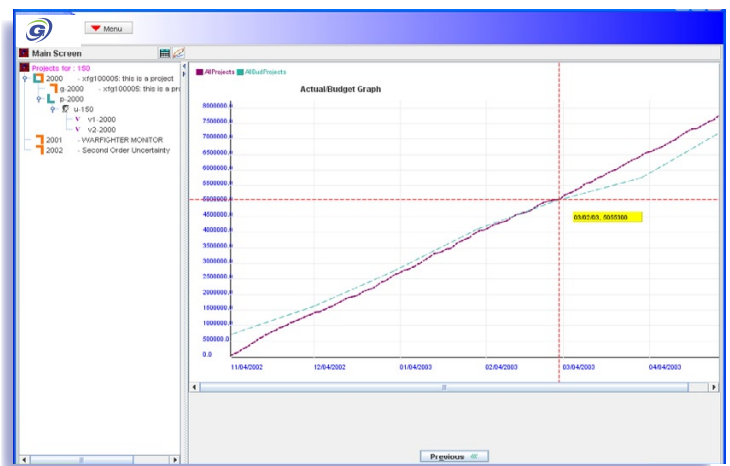
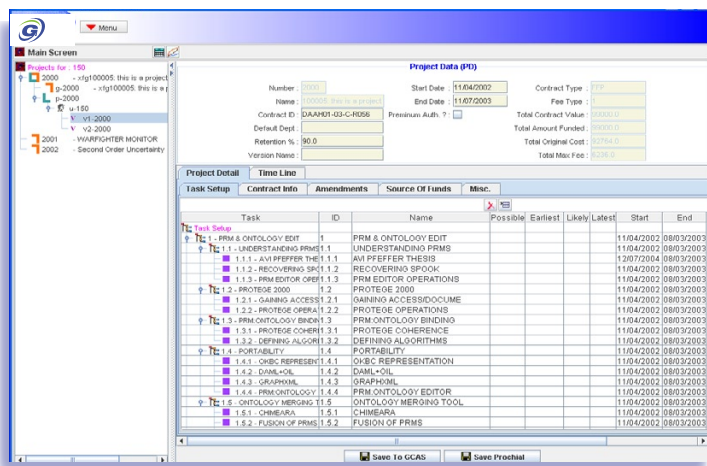


eManage is a web-enabled data entry and reporting system that is a companion to the GCAS Government Cost Accounting System software used by companies that do business with the Federal Government. *eManage* allows Contract Managers, Project Managers and Project Directors to enter contract related information, WBS task structure, budgets and schedules on projects, and to produce reports. Reports include a comparison of the budgeted dollars and schedule to actual expenses and achieved milestones recorded against timecards, GL entries and calculated indirect expense in the GCAS accounting system; as well as Earned Value reports giving the Estimate to Compete. The report information can be displayed in tabular or graphical formats. Advanced features in *eManage* include resource loading and management, CPM, CCM, Earned Value calculation and risk assessment and management. *eManage* is the tool Project Managers need to help control project cost and stay on schedule.



The eManage Module

- Data entry and viewing rights are controlled by the type of user.
 - ✓ Only Contract Managers can enter, modify, delete or commit Contract information.
 - ✓ Project Managers can create project tasks, schedules and budgets and save them in their own parochial version of the database.
 - ✓ Only Project Directors can commit budget and schedule changes to the Accounting system to produce a new baseline.
- A rigorous Budget/Schedule version control system manages multiple local versions stored on the user's parochial database and multiple committed base-line versions stored in the accounting database.
- New projects are conceptualized and created using a Logic Model Wizard. The Wizard insures that key issues for the project are identified, such as: the Situation Analysis, Input/Resources, Activity/Tasks, Outputs, Outcomes, Long Range Impact, Assumptions and External Factors.
- Probabilistic Risk Management techniques are used to identify the likelihood for success and meaningful evaluation criteria & metrics during the project implementation.
- Graphical display of time line comparisons of Budgeted versus Actual expenditures with a user-defined selection of items to be plotted such as employees, labor categories, ODC cost element expenditure, indirect pool costs.

eManage advanced functionality includes:

- ✓ Earned Value Calculations,
- ✓ Critical Path Analysis/Method (CPA/CPM),
- ✓ PERT Charts User interface,
- ✓ Gantt charts schedule/Progress,
- ✓ Milestone Charts,
- ✓ Resource Management and Critical Chain Method,
- ✓ Schedule timelines can be graphically modified by resizing the Gantt task bar,
- ✓ Multi-level views and editing of the project by drilling down on the Gantt task bar,
- ✓ Earned Value Management Reporting,
- ✓ Work Package Generation Report,
- ✓ Process Check List Management (PCLM),
- ✓ Proposal Generation Module,
- ✓ Forecasting Metrics Generation, and
- ✓ Project Risk Management